

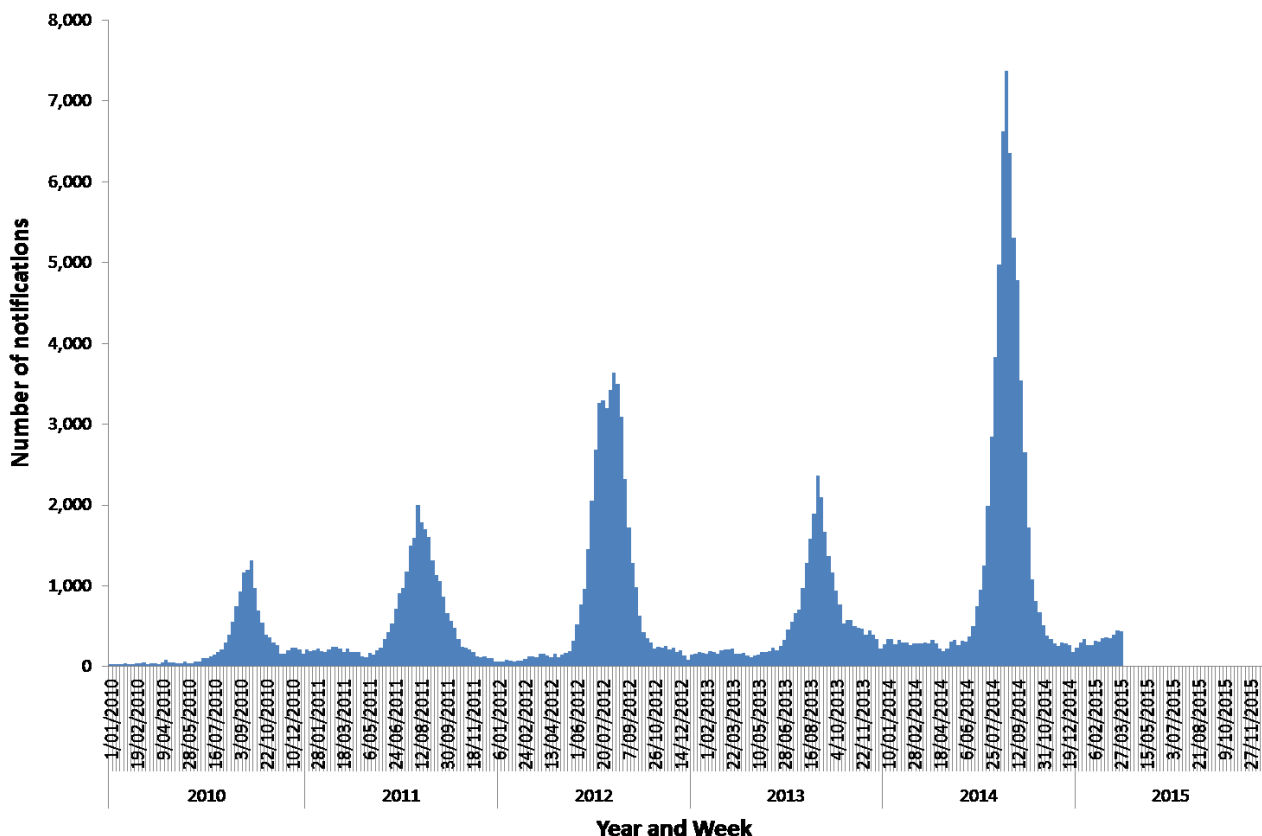


AUSTRALIAN INFLUENZA ACTIVITY UPDATE

SUMMARY

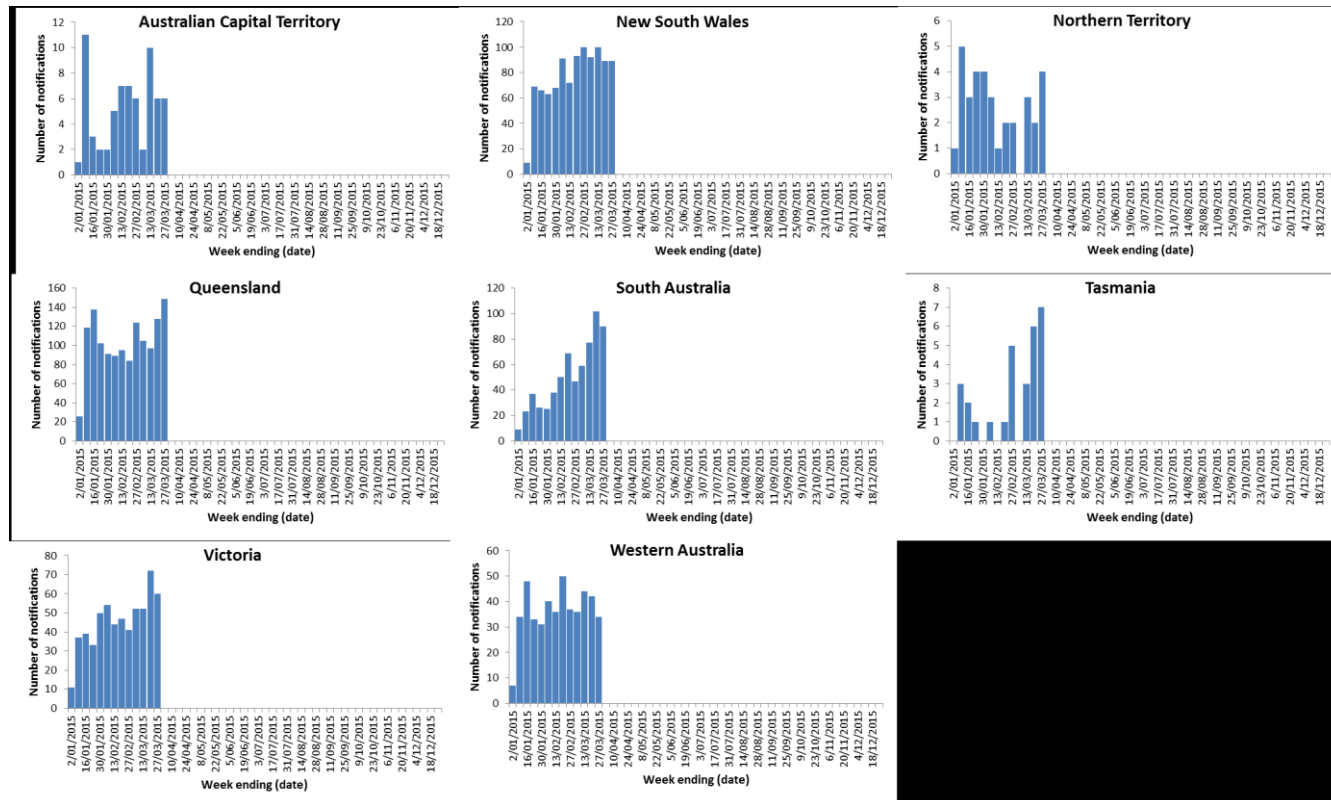
- Australia is currently in the inter-seasonal period for influenza, with overall influenza activity at low levels but showing some increase (Figure 1).
- Influenza activity across jurisdictions is variable (Figure 2), with activity in eastern seaboard states and South Australia at levels higher than the same time last year.
- Nationally, influenza A is the predominant circulating virus type; of those viruses where subtyping data are available, influenza A(H3N2) is most common (Figure 3).
- The majority of influenza viruses circulating in Australia appear to be a good match with the 2015 seasonal influenza vaccine.
- Influenza-like illness (ILI) levels detected through the sentinel GP ILI surveillance system remains low (Figure 4). Currently, rhinovirus infection is the most common cause of ILI detected.

Figure 1: Notifications of laboratory confirmed influenza, Australia, 1 January 2011 to 27 March 2015



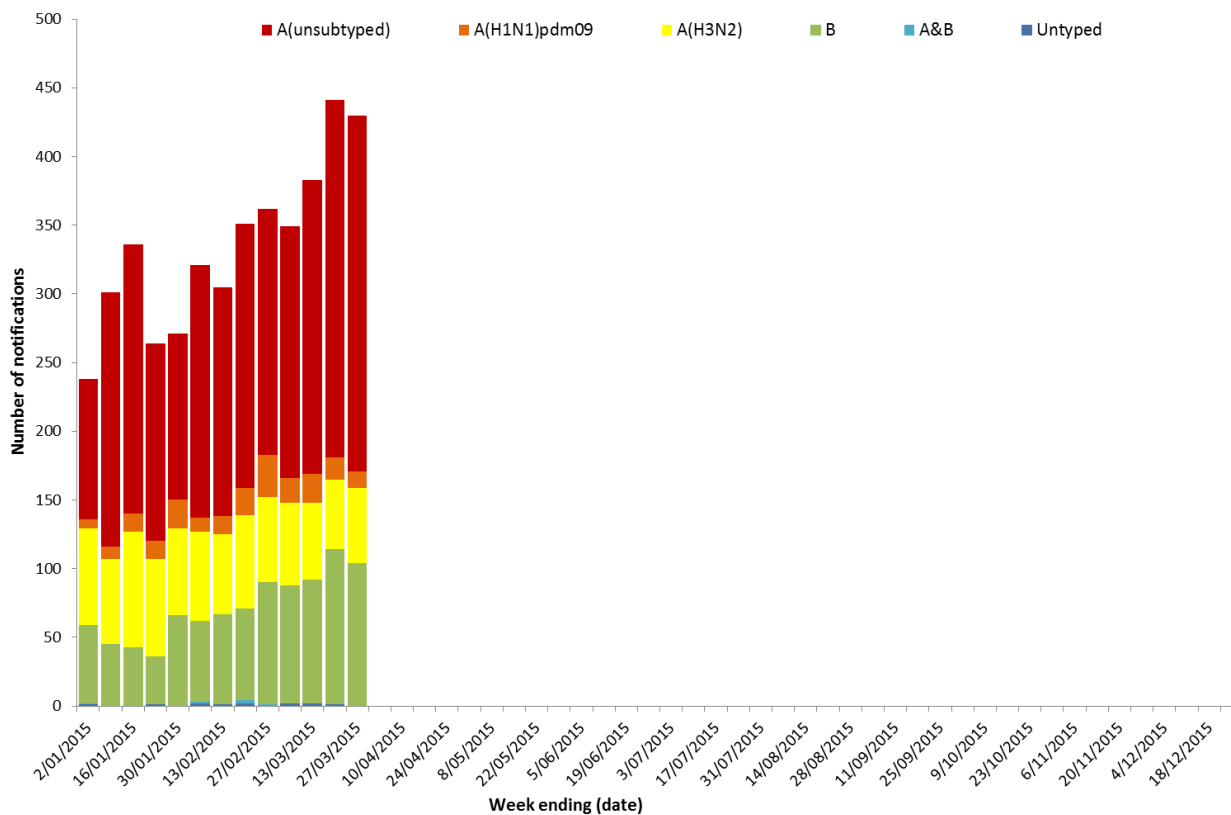
Source: National Notifiable Diseases Surveillance System

Figure 2: Notifications of laboratory confirmed influenza, Australia, 1 January to 27 March 2015, by state or territory and week



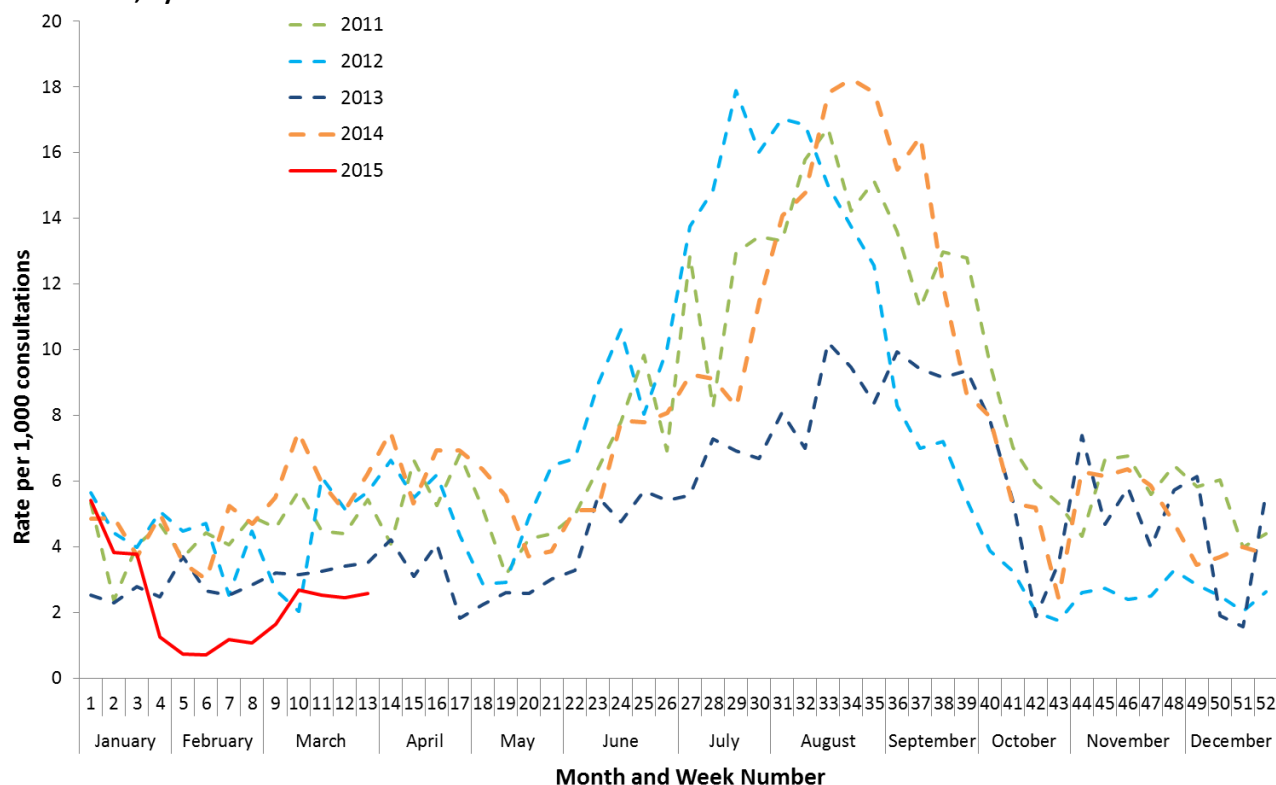
Source: National Notifiable Diseases Surveillance System
 Note: Each figure has a different vertical scale range

Figure 3: Notifications of laboratory confirmed influenza, Australia, 1 January to 27 March 2015, by subtype and week



Source: National Notifiable Diseases Surveillance System

Figure 4: Weekly rate of ILI reported from sentinel General Practitioner ILI surveillance systems, 1 January 2011 to 29 March 2015, by week



Source: Australian Sentinel Practices Research Network and the Victorian Infectious Disease Reference Laboratory General Practitioner influenza-like illness surveillance systems

Background

The Australian Influenza Surveillance Report and Activity Updates are compiled from a number of data sources, which are used to monitor influenza activity and severity in the community. These data sources include laboratory-confirmed notifications to NNDSS; influenza associated hospitalisations; sentinel influenza-like illness (ILI) reporting from general practitioners and emergency departments; ILI-related call centre calls and community level surveys; and sentinel laboratory testing results.

The Australian Influenza Surveillance Report is published on a fortnightly basis during the influenza season, typically between May and October. Influenza activity updates will be published outside of the seasonal period. A more in-depth end-of-season report is also published in *Communicable Diseases Intelligence* journal. All reports are collated and made available at www.health.gov.au/flureport

Contacts

Influenza Surveillance Team

Vaccine Preventable Diseases Surveillance Section
 Health Protection Policy Branch
 Office of Health Protection
flu@health.gov.au