

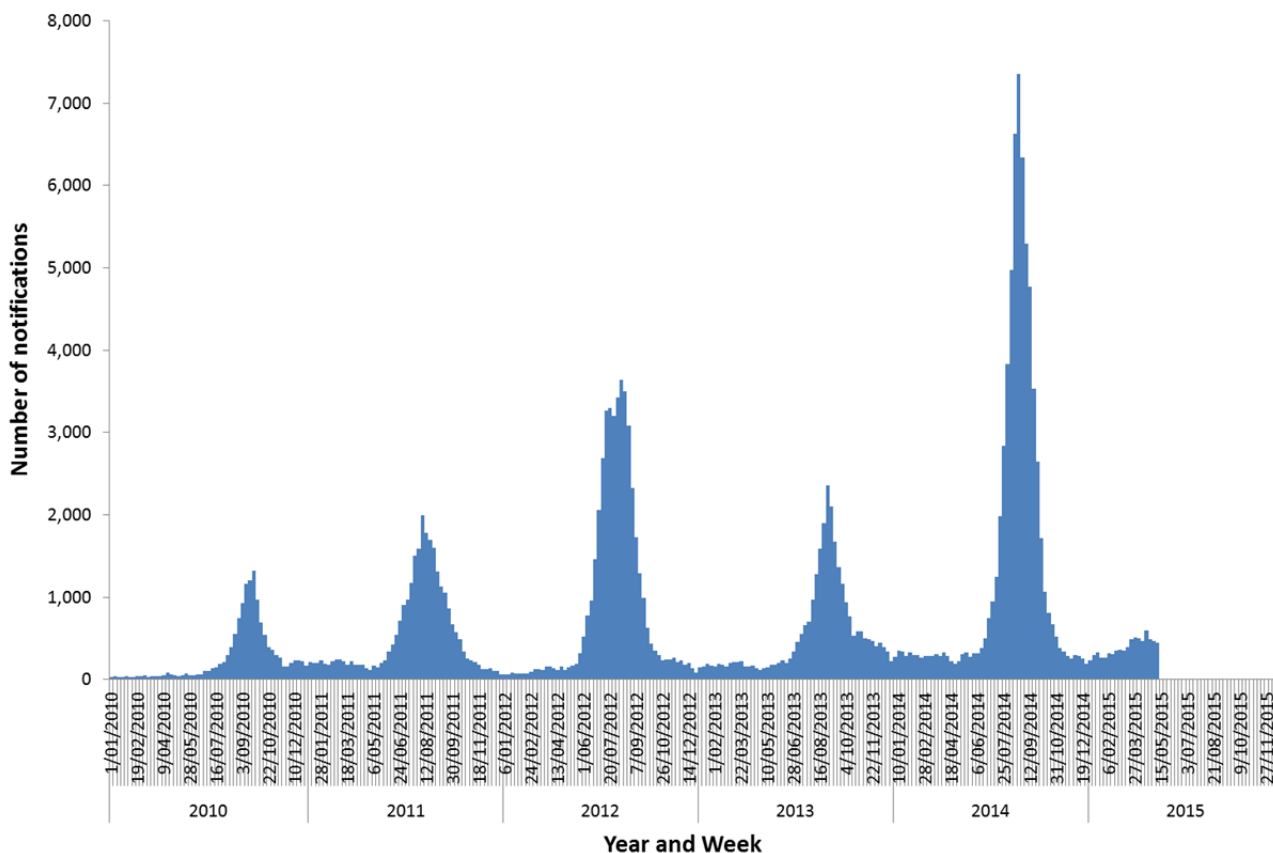


AUSTRALIAN INFLUENZA ACTIVITY UPDATE

SUMMARY

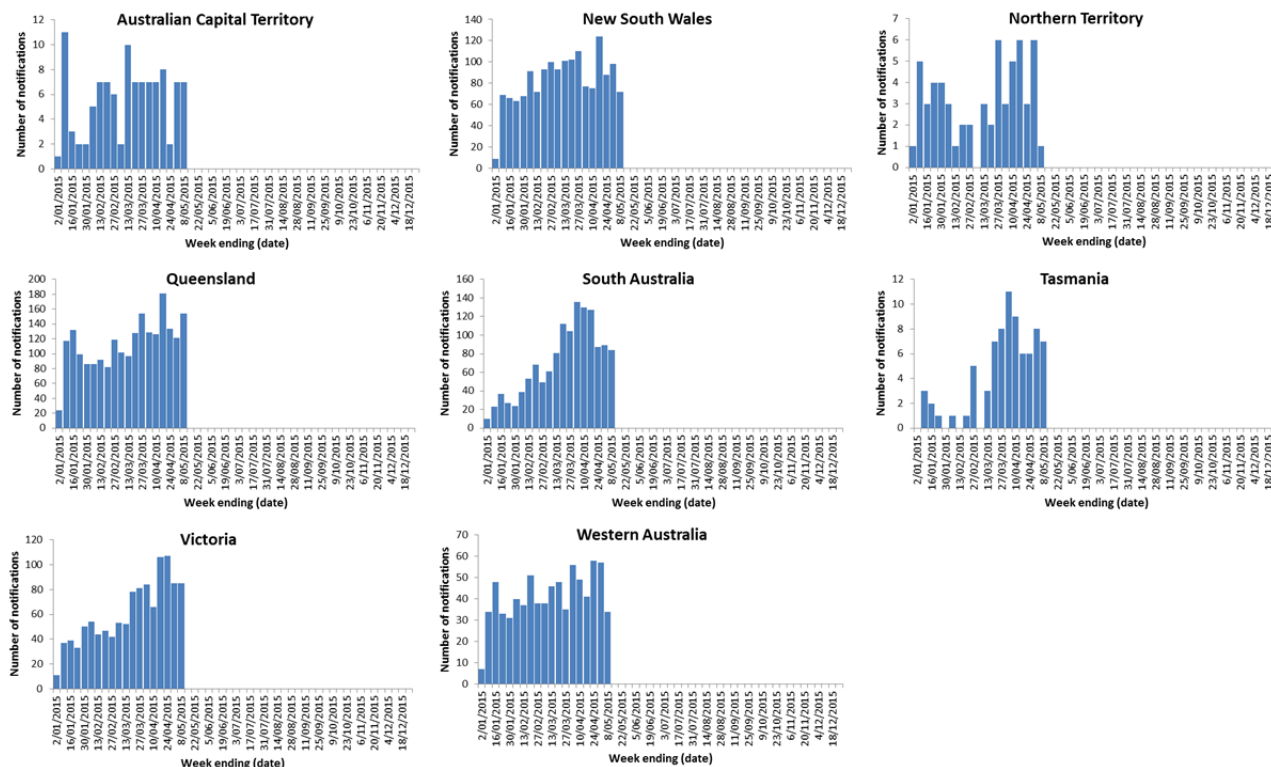
- Australia is currently in the inter-seasonal period for influenza, with overall influenza activity at low levels (Figure 1 and Figure 4).
- Influenza activity across jurisdictions is variable (Figure 2). Recent activity in many jurisdictions has decreased from the unusually high activity seen earlier this year.
- Nationally, influenza A is the predominant circulating virus type; of those viruses where subtyping data are available, influenza A(H3N2) is the most common (Figure 3).
- Of the limited number of isolates that have been further characterised for similarity with the vaccine components, influenza A viruses appear to be well matched. Approximately three-quarters of the influenza B viruses characterised are a match to the trivalent vaccine strain; with the remaining influenza B viruses matching the additional strain in the quadrivalent vaccine.
- Influenza-like illness (ILI) levels detected through the sentinel GP ILI surveillance system remain lower than previous years (Figure 4). In the most recent fortnight, rhinovirus infection was the most common cause of ILI detected.

Figure 1: Notifications of laboratory confirmed influenza, Australia, 1 January 2010 to 8 May 2015



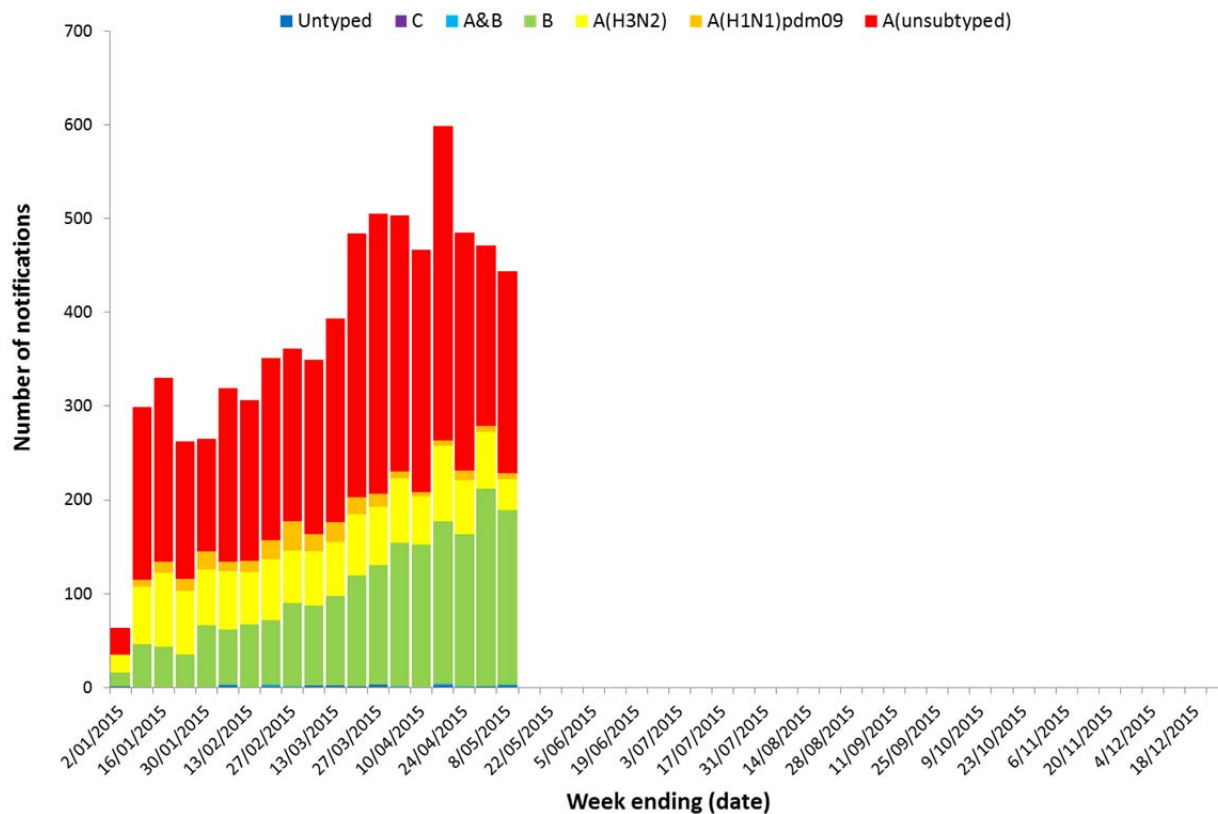
Source: National Notifiable Diseases Surveillance System

Figure 2: Notifications of laboratory confirmed influenza, Australia, 1 January to 8 May 2015, by state or territory and week



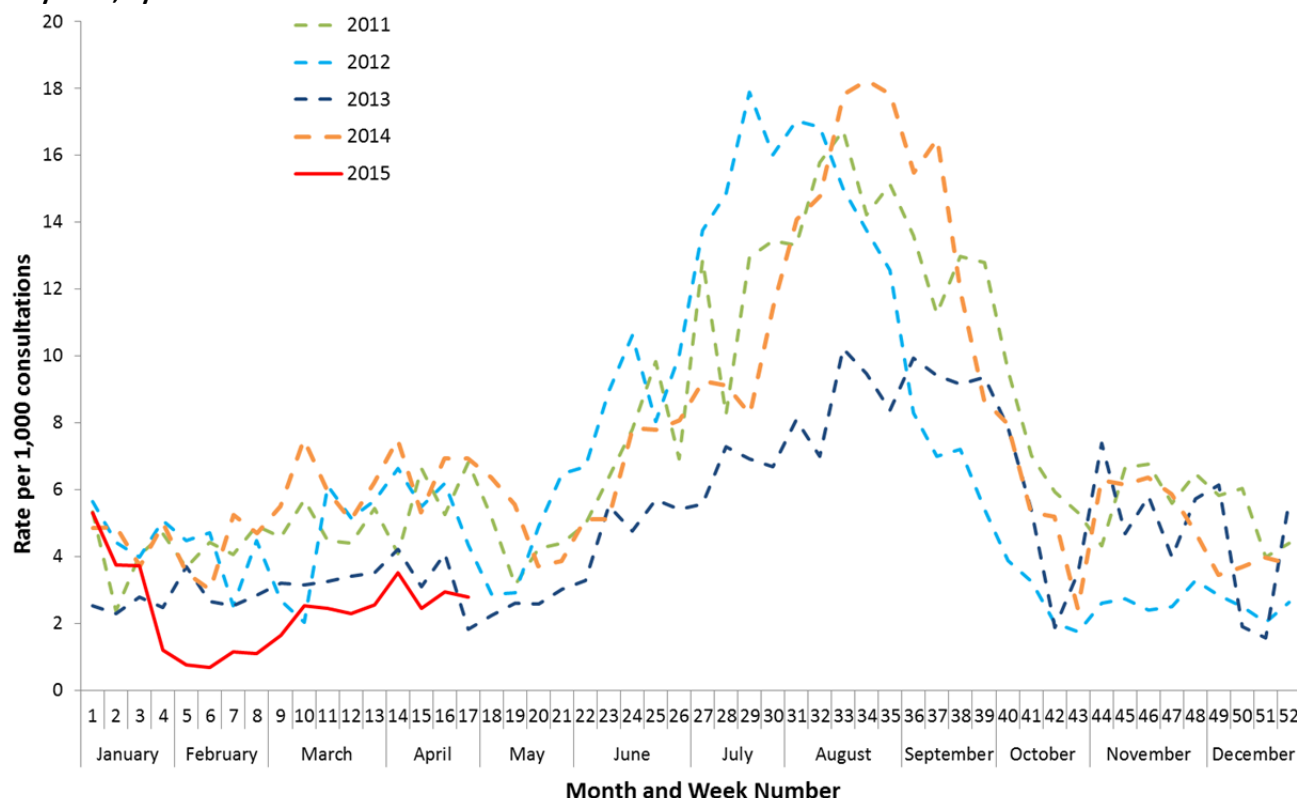
Source: National Notifiable Diseases Surveillance System
 Note: Each figure has a different vertical scale range

Figure 3: Notifications of laboratory confirmed influenza, Australia, 1 January to 8 May 2015, by subtype and week



Source: National Notifiable Diseases Surveillance System

Figure 4: Weekly rate of ILI reported from sentinel General Practitioner ILI surveillance systems, 1 January 2011 to 10 May 2015, by week



Source: Australian Sentinel Practices Research Network. Data from the Victorian Infectious Disease Reference Laboratory General Practitioner influenza-like illness surveillance system is included from May to October each year.

Background

The Australian Influenza Surveillance Report and Activity Updates are compiled from a number of data sources, which are used to monitor influenza activity and severity in the community. These data sources include laboratory-confirmed notifications to NNDSS; influenza associated hospitalisations; sentinel influenza-like illness (ILI) reporting from general practitioners and emergency departments; ILI-related call centre calls and community level surveys; and sentinel laboratory testing results.

The Australian Influenza Surveillance Report is published on a fortnightly basis during the influenza season, typically between May and October. Influenza activity updates will be published outside of the seasonal period. A more in-depth end-of-season report is also published in *Communicable Diseases Intelligence* journal. All reports are collated and made available at www.health.gov.au/flureport

Contacts

Influenza Surveillance Team

Vaccine Preventable Diseases Surveillance Section

Health Protection Policy Branch

Office of Health Protection

flu@health.gov.au