

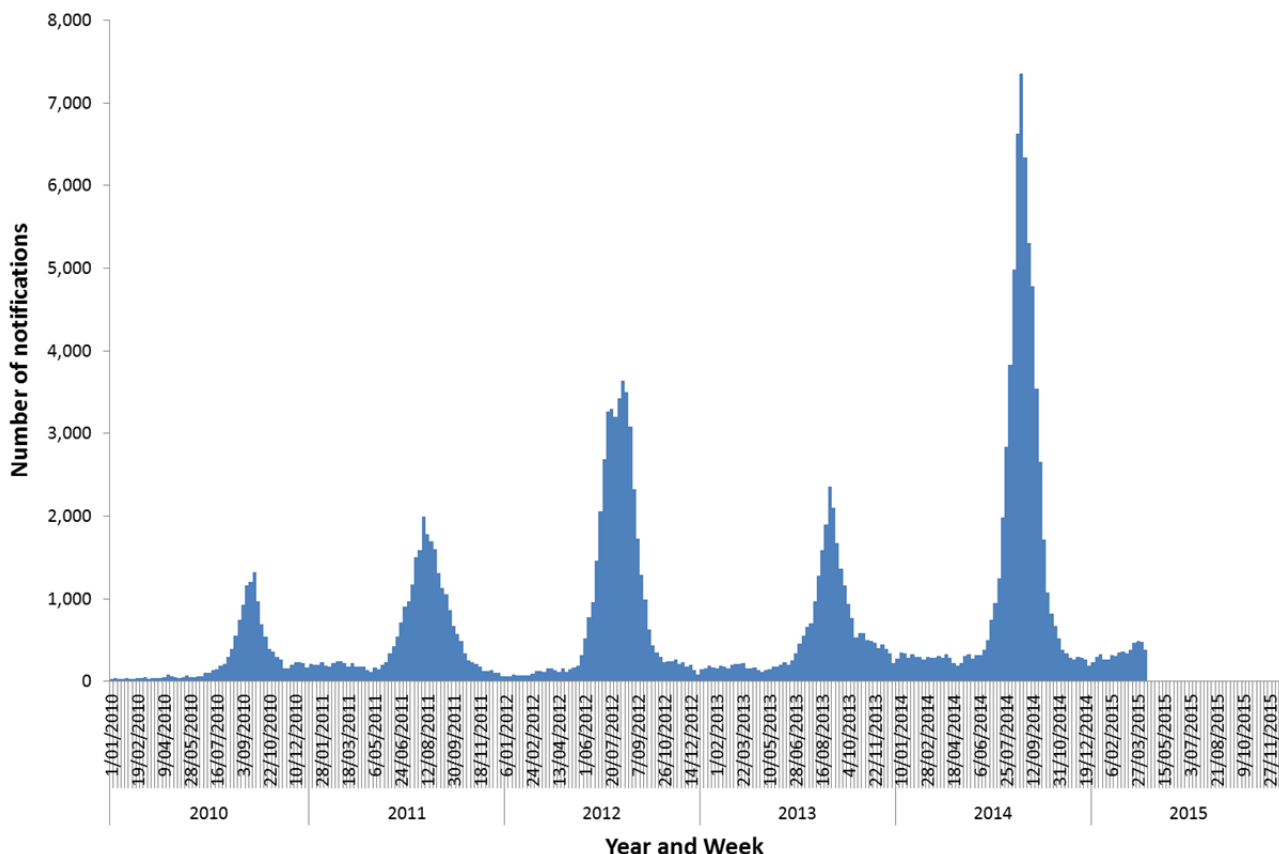


## AUSTRALIAN INFLUENZA ACTIVITY UPDATE

### SUMMARY

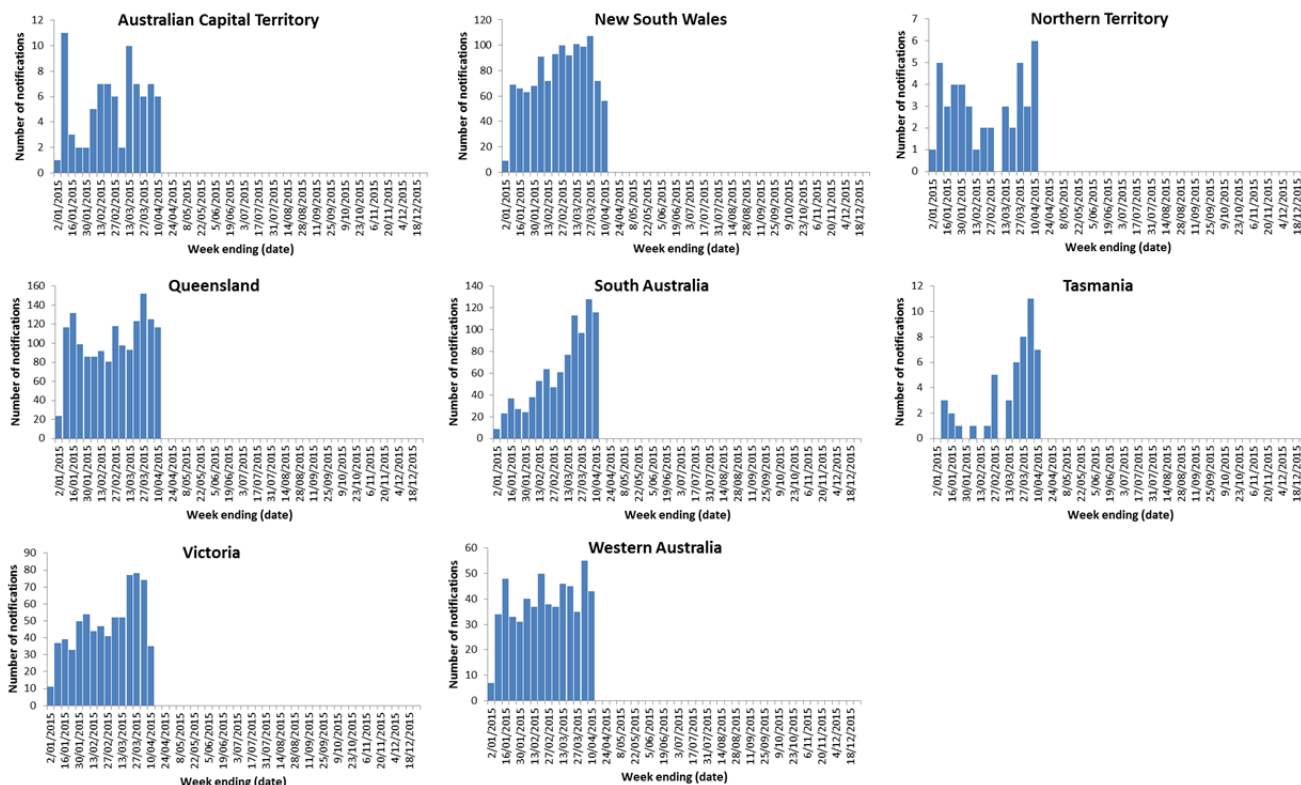
- Australia is currently in the inter-seasonal period for influenza, with overall influenza activity at low levels but showing some increase (Figure 1).
- Influenza activity across jurisdictions is variable (Figure 2). Activity since the start of the year has been higher in a majority of jurisdictions than at the same time last year, however many jurisdictions have reported a decline in activity in the most recent reporting week compared with the week prior.
- Nationally, influenza A is the predominant circulating virus type; of those viruses where subtyping data are available, influenza A(H3N2) is most common (Figure 3).
- The majority of influenza viruses circulating in Australia appear to be a good match with the 2015 seasonal influenza vaccine.
- Influenza-like illness (ILI) levels detected through the sentinel GP ILI surveillance system remain low (Figure 4). In the most recent fortnight, influenza A infection was the most common cause of ILI detected.

Figure 1: Notifications of laboratory confirmed influenza, Australia, 1 January 2011 to 10 April 2015



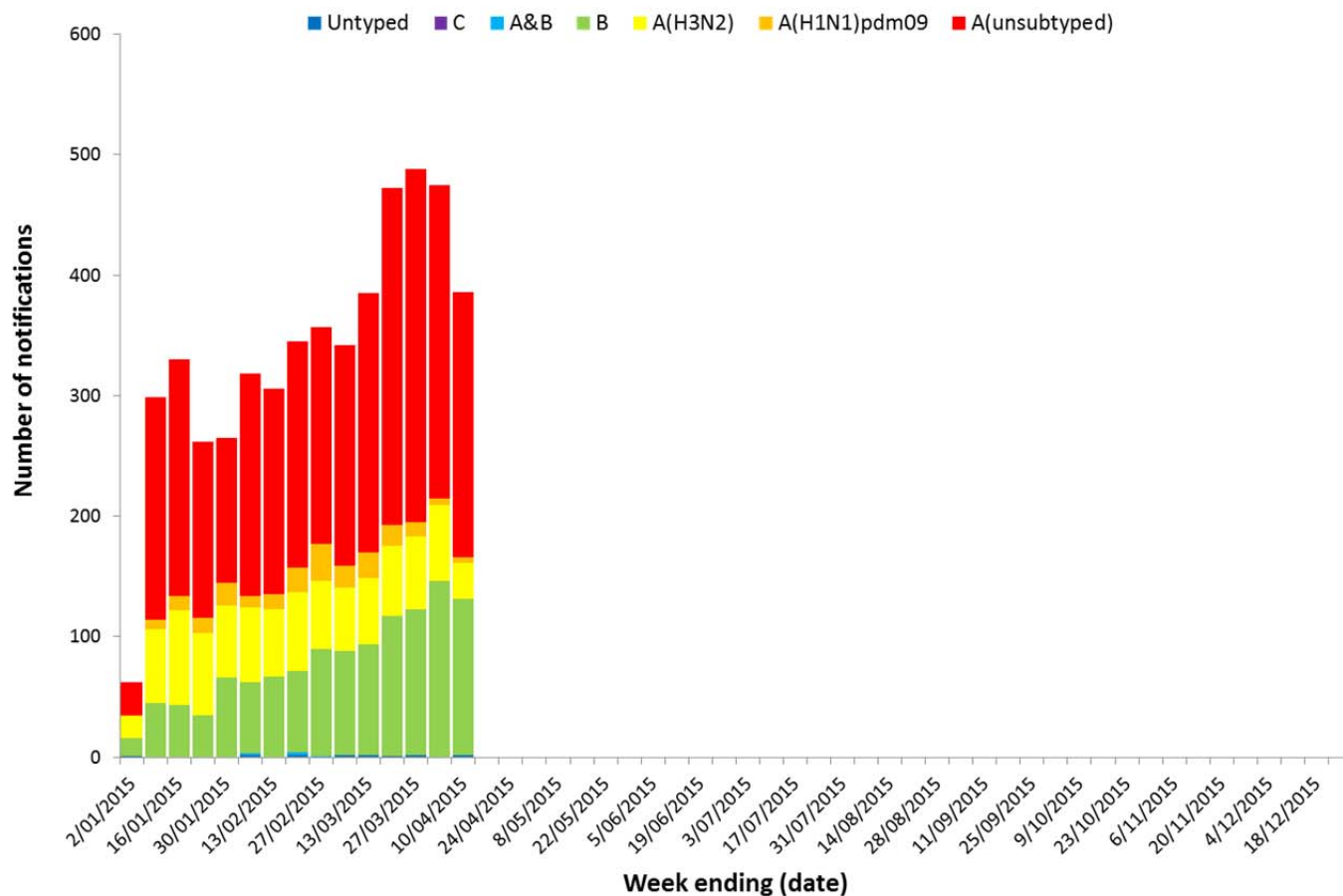
Source: National Notifiable Diseases Surveillance System

**Figure 2: Notifications of laboratory confirmed influenza, Australia, 1 January to 10 April 2015, by state or territory and week**



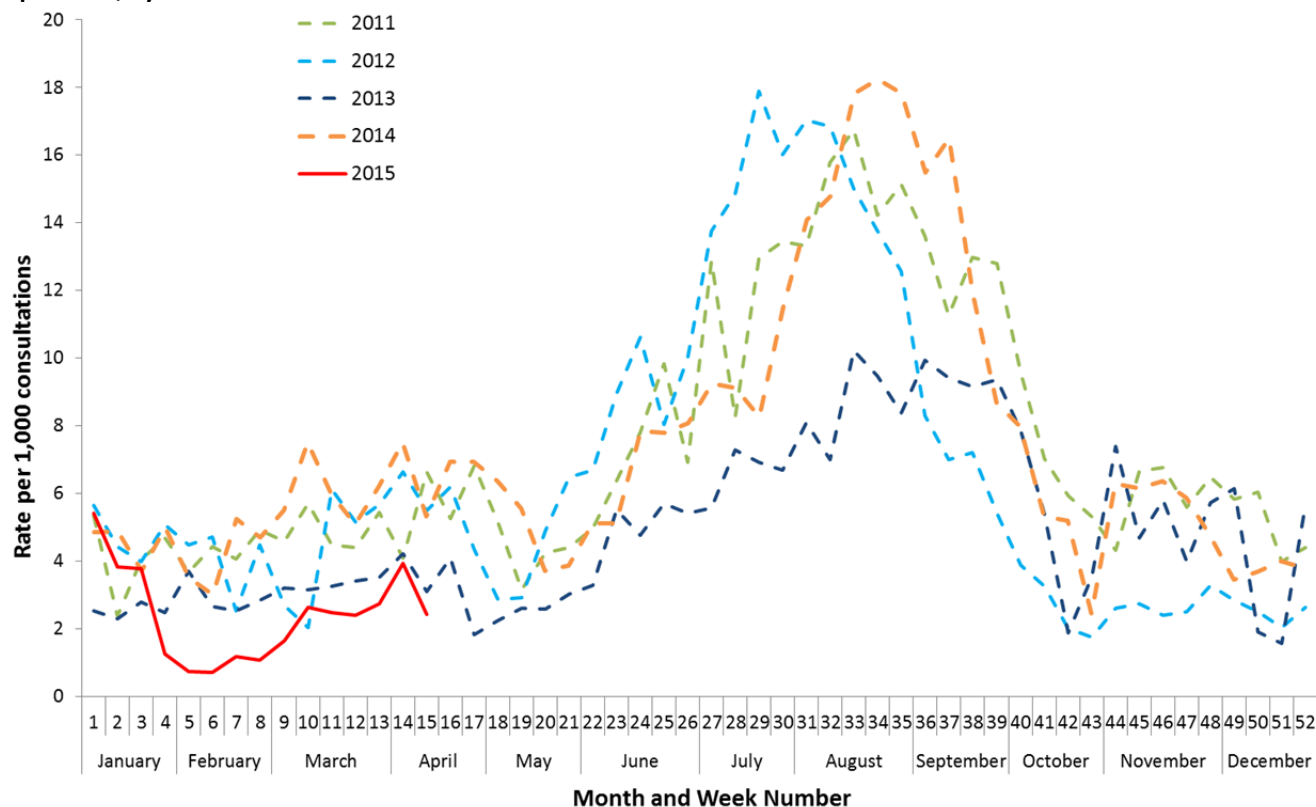
Source: National Notifiable Diseases Surveillance System  
 Note: Each figure has a different vertical scale range

**Figure 3: Notifications of laboratory confirmed influenza, Australia, 1 January to 10 April 2015, by subtype and week**



Source: National Notifiable Diseases Surveillance System

**Figure 4: Weekly rate of ILI reported from sentinel General Practitioner ILI surveillance systems, 1 January 2011 to 12 April 2015, by week**



Source: Australian Sentinel Practices Research Network. Data from the Victorian Infectious Disease Reference Laboratory General Practitioner influenza-like illness surveillance system is included from May to October each year.

## Background

The Australian Influenza Surveillance Report and Activity Updates are compiled from a number of data sources, which are used to monitor influenza activity and severity in the community. These data sources include laboratory-confirmed notifications to NNDSS; influenza associated hospitalisations; sentinel influenza-like illness (ILI) reporting from general practitioners and emergency departments; ILI-related call centre calls and community level surveys; and sentinel laboratory testing results.

The Australian Influenza Surveillance Report is published on a fortnightly basis during the influenza season, typically between May and October. Influenza activity updates will be published outside of the seasonal period. A more in-depth end-of-season report is also published in *Communicable Diseases Intelligence* journal. All reports are collated and made available at [www.health.gov.au/flureport](http://www.health.gov.au/flureport)

## Contacts

### Influenza Surveillance Team

Vaccine Preventable Diseases Surveillance Section  
 Health Protection Policy Branch  
 Office of Health Protection  
[flu@health.gov.au](mailto:flu@health.gov.au)